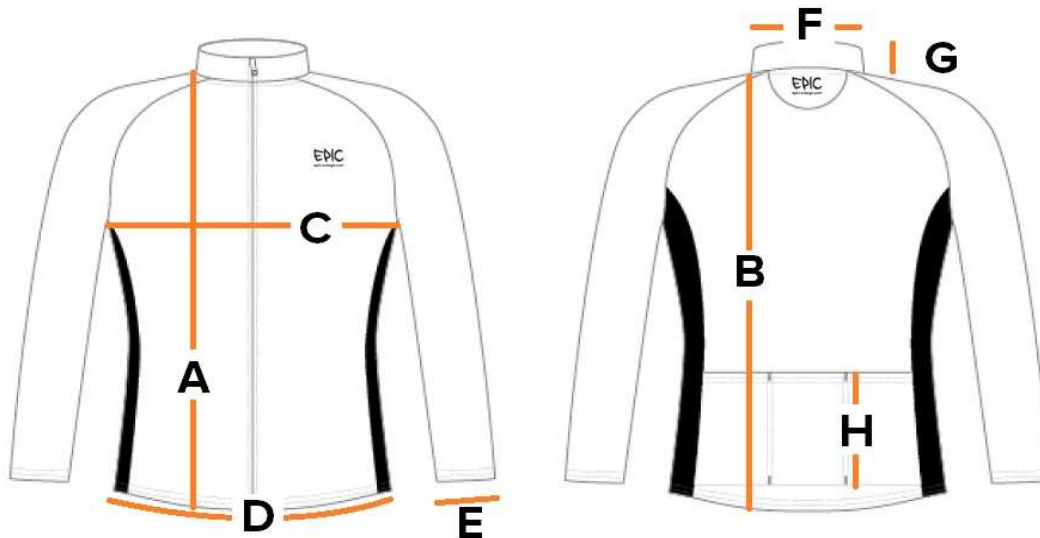


Women's Roubaix Thermal Race Jackets

	Size (measurements in CM)	2XS	XS	S	M	L	XL	2XL	3XL
A	Front Body Length (From shoulder)	53.0	55.0	57.0	59.0	61.0	63.0	65.0	67.0
B	Back Body Length (From shoulder)	61.0	63.0	65.0	67.0	69.0	69.0	71.0	73.0
C	1/2 Chest 1/2	39.0	42.0	45.0	48.0	51.0	54.0	57.0	60.0
D	1/2 Hem 1/2	40.0	42.0	44.0	47.0	50.0	53.0	56.0	59.0
E	1/2 Arm Opening (straight)	8.5	8.5	9.0	9.0	9.5	10.0	10.5	10.5
F	Neck Width	14.5	15.0	15.5	16.0	16.5	17.0	17.5	18.0
G	Collar Height	4.5	4.5	4.5	4.5	4.5	4.5	4.5	4.5
H	Height of back pockets	16.5	16.5	16.5	16.5	16.5	16.5	16.5	16.5



Note: All dimensions are in a 'relaxed' state, and will stretch fit beyond these dimensions.

Item Description:

Roubaix lined Thermal Race Jackets are lined with a smooth thermal elastic based fabric for superior fit.

Provides warmth, comfort & breath-ability to this lightweight jacket.

Ideal for Spring/Autumn training and Winter Racing.

Can be used as an outer or part of a layering system for prolonged use.

High collar and enclosed lockable zip closure.

Optional improved integrated Reflective pack safety features at no extra charge (fitted as standard but optional).

Double stitched angled pockets with 3cm waistband for snug, secure fit.

Highest quality Sublimation printing.

Sizing: XXS-XXXL

Our tip; Size down for tight race fit or standard size to wear as part of a layering system.