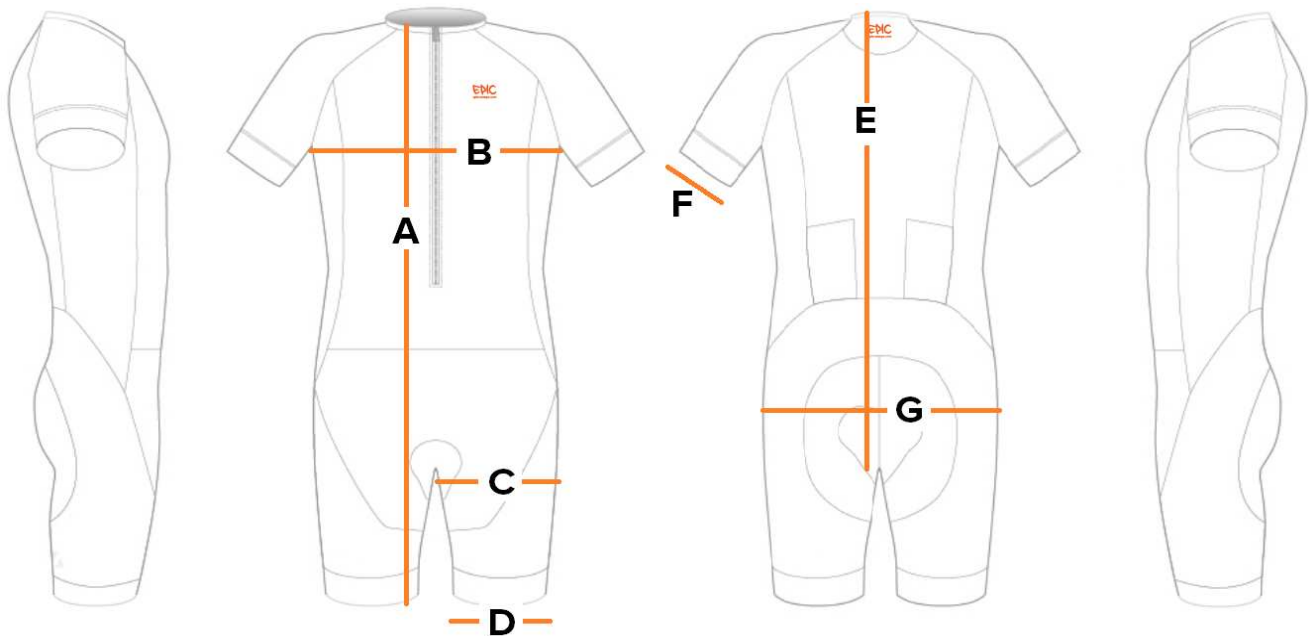


## Women's Pro Aero WAFFLE Speedsuits (Skinsuits)

	Size (measurements in CM)	2XS	XS	S	M	L	XL	2XL	3XL
<b>A</b>	Body Length Front	75.0	78.0	81.0	84.0	87.0	89.0	90.0	91.0
<b>B</b>	1/2 Chest Width (Relaxed)	33.0	35.0	37.0	39.0	41.0	43.0	45.0	47.0
<b>C</b>	1/2 Thigh	20.5	21.5	22.5	23.5	24.5	25.5	26.5	27.5
<b>D</b>	1/2 Leg Opening	16.0	17.0	18.0	19.0	20.0	21.0	22.0	23.0
<b>E</b>	Back Length	70.0	72.0	74.0	76.0	78.0	80.0	82.0	84.0
<b>F</b>	1/2 Arm opening	10.5	10.8	11.0	11.3	11.5	11.8	12.0	12.3
<b>G</b>	1/2 Hip	28.5	30.5	32.5	34.5	36.5	38.5	40.5	42.5



**Note: All dimensions are in a 'relaxed' state, and will stretch fit beyond these dimensions.**

### Item Description:

Aero WAFFLE Pro Cycle Speedsuits (Skinsuits)

Custom Aero WAFFLE Pro Cycle Speedsuits are Pro Cycle Skinsuits with a Short Sleeve design.

New **WAFFLE Aerodynamic materials** are used along the arms/shoulders, side panels and leg opening. **WAFFLE enables a thin layer of turbulent air to cling to the contours of the rider, reducing wake and lowering drag.**

Two Aero Rear Pockets are fitted as standard, they sit totally flat when not in use.

Fitted into the small of your back (least turbulent area) and are ideal for gels or a multi-tool.

Highest quality **7-8 hour Italian 'Elastic Interface®' EIT Carbonium Microfibre chamois for ultimate comfort!** Many of our competitors will charge £15+ to upgrade onto these top quality Chamois pads. Here at EpicOrange we believe comfort is everything so we fit them **FREE!**